

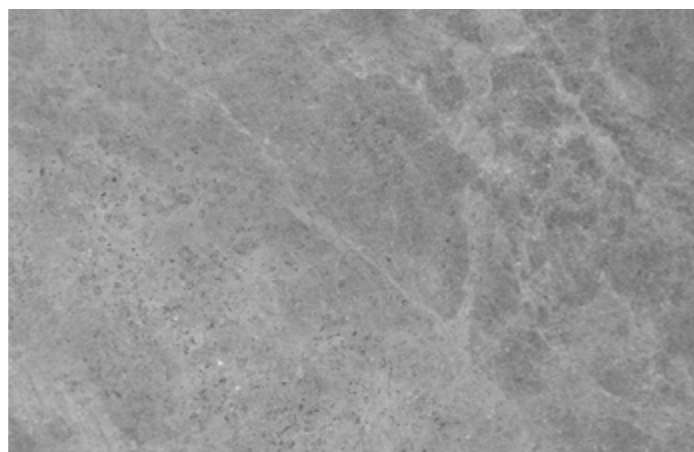
# Limestone



PRIMI  
CERAMICHE



For over 30 years **Primi Ceramiche** brand has been representing the best expression of Italian excellence and design applied to its products. **Porcelain floors and walls, for indoor and outdoor**, made with the aim of ensuring sturdiness and able to **preserve their beauty over time**.



The nuance of colours and the variety of available finishes for this collection allows to meet the needs of design and the taste of our customers.

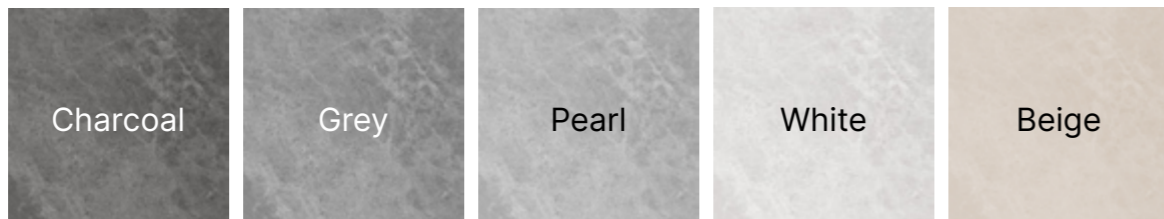
## Sizes

600×600mm  
300×600mm  
300×300mm

## Finishes

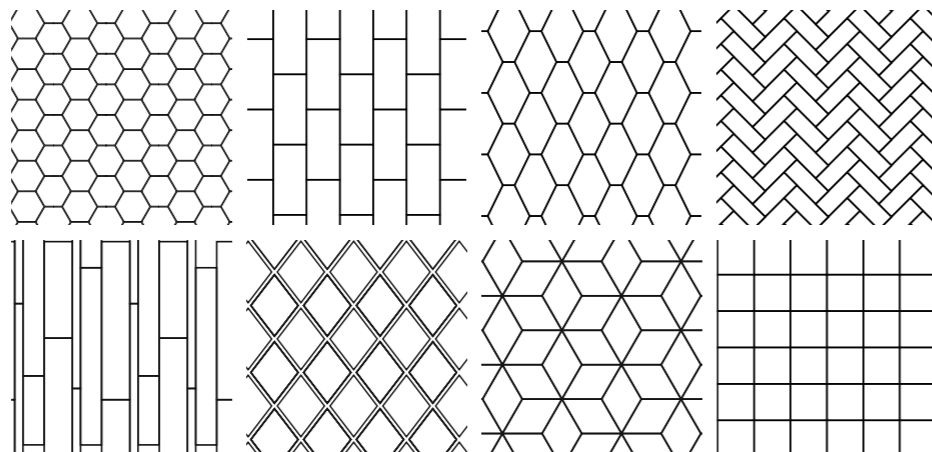
Matt  
Semipolished  
Antislip

## Colours



## Mosaics

For most sophisticated we recommend **Mosaic Line**, custom solutions that we produce only upon request.



## Technical Characteristics

GLAZED PORCELAIN TILES

| TEST ITEM                           |                         | REFERENCE STANDARD | STANDARD REQUIREMENTS   | TEST RESULTS                                |
|-------------------------------------|-------------------------|--------------------|---|---|
| WATER ABSORPTION                    |                         | ISO 10545-3        | 1% - <3%  | 0,27%                                       |
| BREAKAGE PRESSURE (N)               |                         | ISO 10545-4        | ≥1300N  | 2050N                                       |
| SURFACE QUALITY                     |                         | ISO 10545-2        | 95% of the tiles will not show any surface defects inspected with the naked eye from 1 meter distance | Conforming                                  |
| SURFACE FLATNESS                    | Center bending strength | ISO 10545-2        | ±0.5  | -0.07%~±0.03%                               |
|                                     | Warpage                 | ISO 10545-2        | ±0.5  | 0~±0.16%                                    |
|                                     | Side bending strength   | ISO 10545-2        | ±0.5  | 0~±0.17%                                    |
| SIDE DEVIATION                      |                         | ISO 10545-2        | ±0.6%   | 0~±0.13%                                    |
| SIDE LENGH                          |                         | ISO 10545-2        | ±0.6%   | 0~±0.13%                                    |
| RECTANGULARITY                      |                         | ISO 10545-2        | ±0.6%   | 0.08%~±0.08%                                |
| STRAIGHTNESS OF SIDES               |                         | ISO 10545-2        | ±0.5%   | 0.03%~±0.03%                                |
| RESISTANCE TO SURFACE ABRASION      |                         | ISO 10545-7        | 2100,6000,12000   | CLASS 4 Failure visible at 2100 revolutions |
| SLIP RESISTANCE - WET PENDULUM TEST |                         | AS4586-2013        | METHOD SLIDER 96: SRV 35-44   | P3 (SRV 40)                                 |
| RESISTANCE TO CHEMICAL              |                         | ISO 10545-13       | MIN. GB   | GA (V)                                      |
| STAIN RESISTANCE                    |                         | ISO 10545-14       | MIN.CLASS 3   | CLASS 5                                     |



Via L. Ariosto 30, 35128 Padova – ITALY  
+39 049 780 8487  
[info@expocasapadova.it](mailto:info@expocasapadova.it)